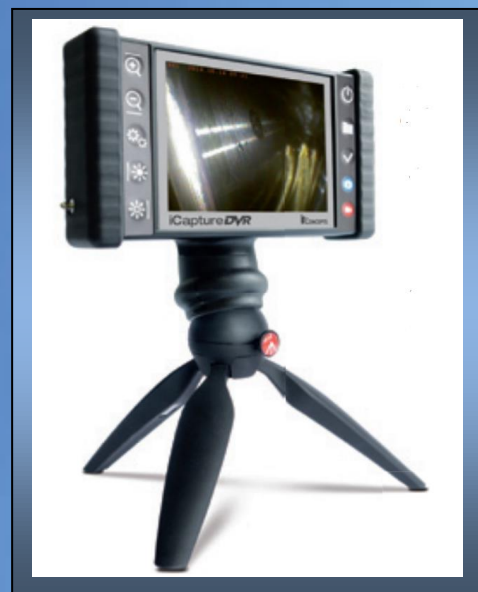




Power generation

VIDEOSCOPE INSPECTION OF BEARINGS FOR WIND POWER TURBINES

ITSVIDEOSCOPIES.COM



**5" or 7" High Resolution, 1280x800 Pixel, Compact
Light & Portable Touch Screen Display, With High
Resolution Advanced Image Sensor.**



Made In USA

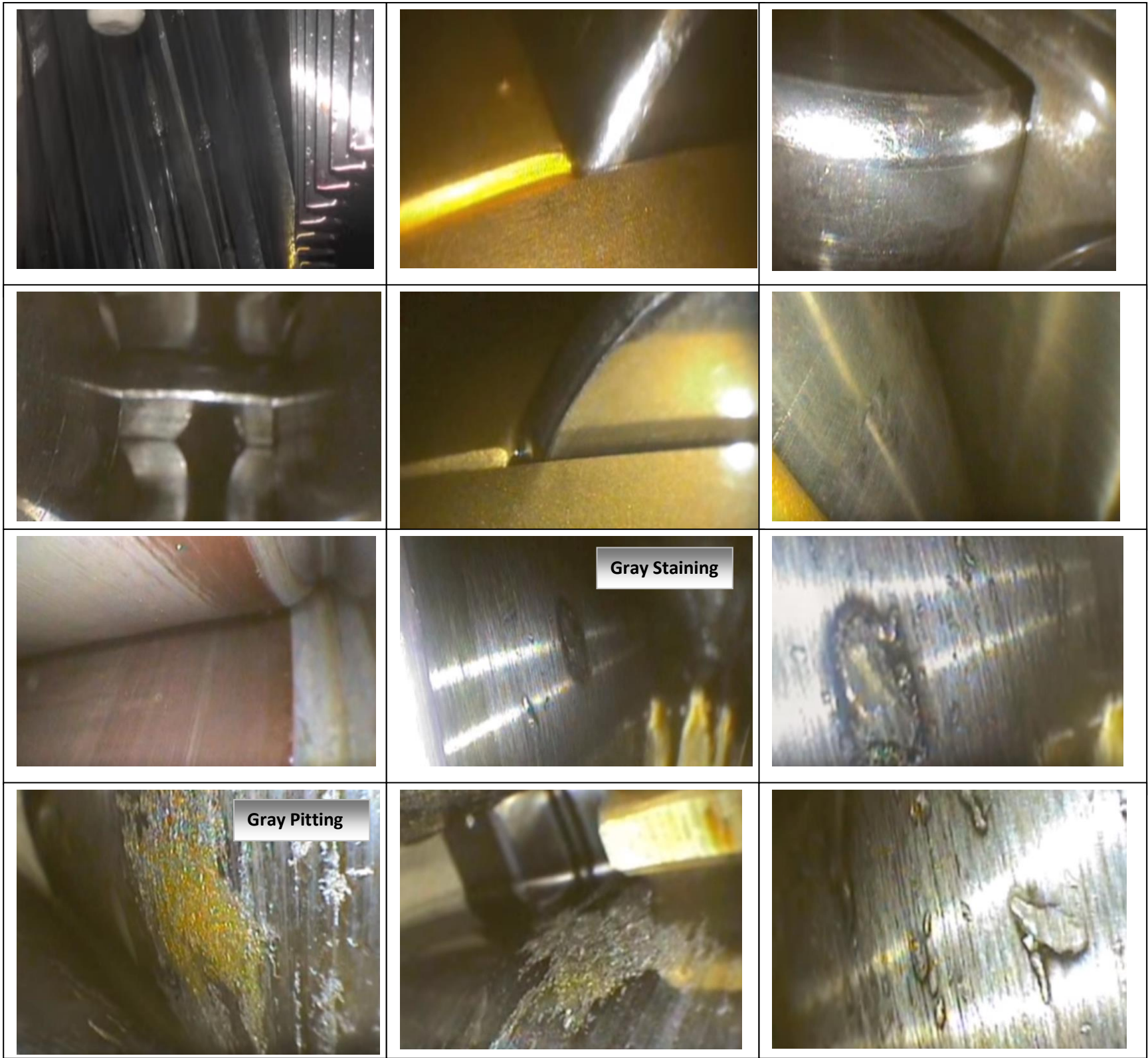
WIND POWER TURBINE INSPECTION



Wind power plants generate energy only when the rotors are turning. Extremely high power demand is punishing on the toothed wheels and bearings of the rotors and gears. That's why providers in-the-know have been relying on our portable endoscopes for quality rotor inspections for many years to quickly detect wear and tear and avoid the high costs of rotor replacement. Nuclear and conventional power plants contain numerous components that need internal inspection, as well: Pressure vessels, heat exchanger pipes and steam pipes are all highly subject to corrosion. Our endoscopes, with their high-resolution sensors, give you detailed, crystal-clear picture and/or video, taking the guess-work out of the repair-or-replace decision, saving you money and keeping your plant operating at top capacity.

Gearbox Videoscope Inspection

iTool Videoscope System With Short Distance Objective Lens



iCAPTURE PRO / iLED PRO / XLED PRO

MODULAR VIDEOSCOPE SYSTEMS WITH INTERCHANGEABLE PROBES



iLED Videoscope System

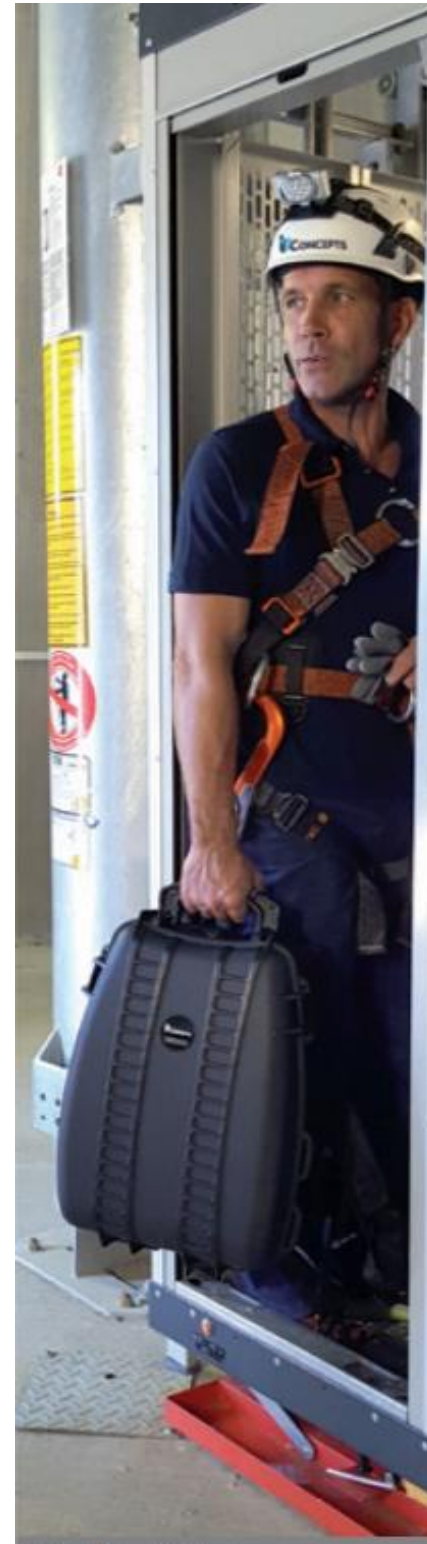


iCapture DVR Product Datasheet

- 5" High Resolution Display
- 7" High Resolution Touchscreen Option Available
- Capture & Video Recording
- Comparative Measurement
- Long Battery Life

iLED Video Interchangeable Endoscope Datasheet

- Fully Articulated Probes
- Tungsten Braided Cable
- Illuminated 3-Light LED Setting
- Objective Lenses with Precise Probe Control
- Temperature Resistant up to 140° C (284° F)
- Future upgradeable options include interchangeable probes of various diameters using split-screen 7" high-definition display.

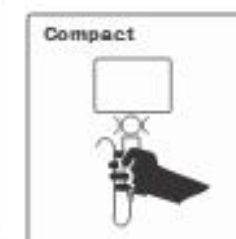
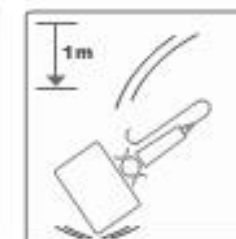
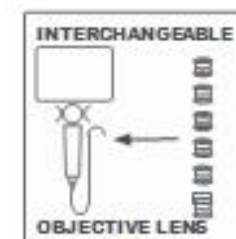
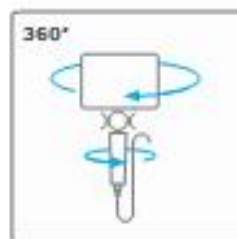
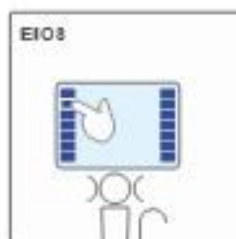
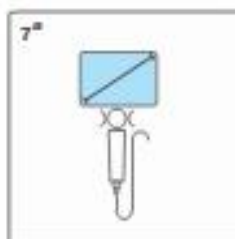


THE NEW PRO-SERIES



IRIS PRO

THE NEW COMPACT AND PORTABLE VIDEOSCOPE SYSTEM



iCAPTURE PRO

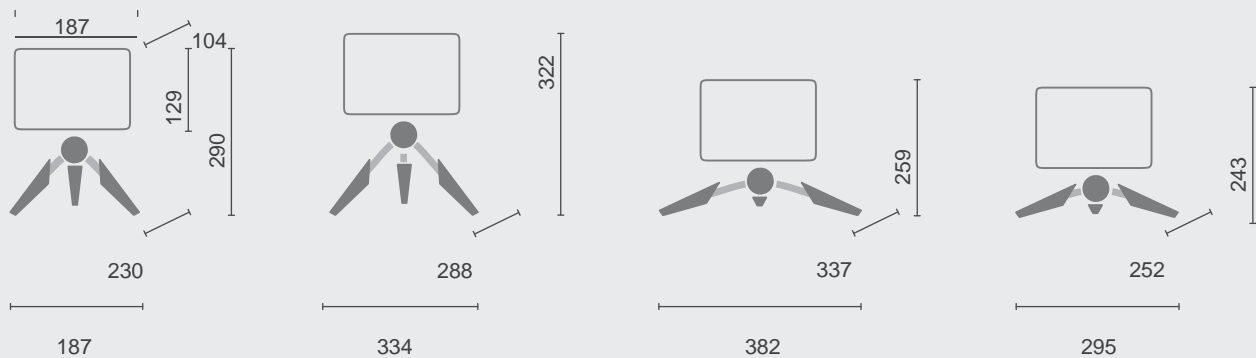
Display Size:	7.0"
Display Resolution:	1280x800 pixel
Operating System:	EIOS (Endoscopic Imaging Operation System)
Interface:	USB
Power Supply, Primary:	Rechargeable Li-ion battery Power
Supply, Secondary:	12 V adapter (optional accesorys)
Storage:	Internal 16GB/USB (16GB delivery)
Video format:	MPEG4 (.avi)
Image format:	BMP (.bmp), JPEG (.jpg), PNG (.png)

IMAGE ANALYSIS

Method:	Comparative Measurement
---------	-------------------------

OTHER DATA

Ergonomics:	Articulating
Weight:	1.28Kg
Dimensions:	see below
Housing:	Rugged PU with rubber shock protection
Operating Temperature:	-25°C to +46°C
Storage Temperature:	-25°C to +60°C
Relative Humidity:	95% less than non condensing



CONTACT RAY ARISS AT 949-232-5837

iLED PRO

Sensor	High Resolution Super HAD CCD Imaging		
PROBES (mm)	4.0	6.0	8.0
Working Length (m)	1.0 – 4.0	1.0 – 7.5	1.0 – 7.5
Articulation (2-way/4-way)	4-way	4-way	4-way
Integrated objective lens	●	-	-
Interchangeable objective lens	-	●	●
Side view tip adapter	●	●	●

XLED PRO

Sensor	AIT Advanced Image Sensor			
PROBES (mm)	2.4	3.0	4.0	6.0
Working length (m)	1.0–3.0	1.0–1.5	1.0–3.0	1.0– 7.5
Articulation (2-way/4-way)	2-way	2-way	4-way	4-way
Integrated objective lens	●	●	●	●
Side view tip adapter	-	-	-	●
Side view option	●	●	●	●

XLED 3

Sensor	AIT Advanced Image Sensor	
PROBES (mm)	3.0	4.0
Working length (m)	1.0–1.5	1.0–3.0
Abwinklung (2-fach)	2-way	2-way
Integrated objective lens	●	●
Side view option	●	●

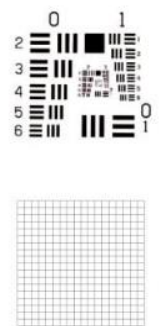
Interchangeable Objectives
For different applications



SMART-FOCUS Close focus and far focus with only one objective lens.



TEST-Chart



Why ITS Videoscopes?

We'd like to share with you how ITS Videoscopes provides **best-in-class technology at a price point well below the brand-name competition.**

Our scopes feature:

- Image Quality and Brightness
- Service Costs - Other vendors repair charges run up to 75% of the cost of the unit. ITS Videoscopes repair charges run around 50% of unit cost.
- Interchangeable Probe Diameters and Flexibility/Articulation
- Durability
- Data Collection
- Customer Support/Customization

- Ease-of-Use
 - Tactile feel
 - Ergonomic, intuitive controls
- Limited Downtime
 - Less training time
 - Longer battery life/included extra battery pack
 - One scope tip to handle a range of focal lengths - no downtime needed to change tips for various applications.

We believe in our products and stand by our customers by providing:

- Application support provided by Engineers with extensive experience
- Customizable solutions
- We're worldwide, but provide local and on-site support and training
- 1 year warranties

Please contact us today at (949) 232-5837 to schedule a demo!